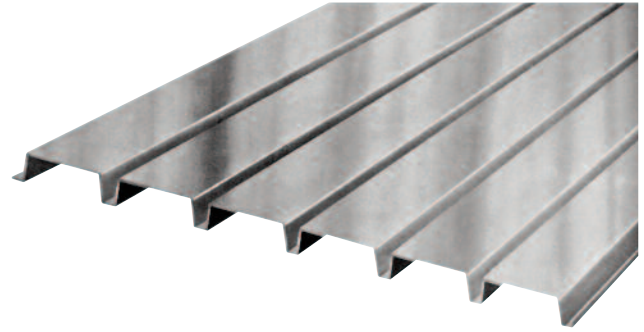


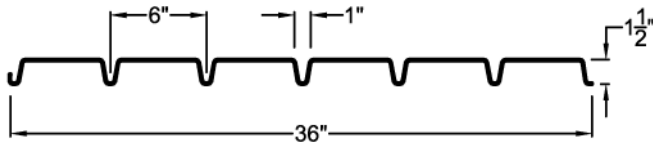
## 1.5 A

Maximum Sheet Length 42'-0"  
 Extra Charge for Lengths Under 6'-0"  
 ICC ER-3415

Factory Mutual Approved  
 Deck type & gauge — Max. deck span  
 1.5A22..... 4'-10"  
 1.5A20..... 5'-3"  
 1.5A18..... 6'-0"  
 FM Approvals No. 0C8A7.AM



ROOF



Type A (narrow rib) deck provides an economical roof system when utilized with thinner insulation materials. It also allows the maximum area for adhesive contact, and its nestable quality eliminates the need for die-set ends.

1/2" rigid insulation may be used with Type A deck.

### SECTION PROPERTIES

Deck type	Design thickness in.	W psf	Section Properties				V <sub>a</sub> lbs/ft	F <sub>y</sub> ksi
			I <sub>p</sub>	S <sub>p</sub>	I <sub>n</sub>	S <sub>n</sub>		
			in <sup>4</sup> /ft	in <sup>3</sup> /ft	in <sup>4</sup> /ft	in <sup>3</sup> /ft		
A22	0.0295	1.80	0.104	0.098	0.120	0.106	1700	33
A20	0.0358	2.16	0.134	0.122	0.145	0.130	2049	33
A19	0.0418	2.51	0.163	0.145	0.170	0.152	2377	33
A18	0.0474	2.84	0.190	0.167	0.193	0.172	2679	33

### VERTICAL LOADS FOR TYPE 1.5A

No. of Spans	Deck Type	Max. SDI Const. Span	Allowable Total (PSF) / Load Causing Deflection of L/240 or 1 inch (PSF)										
			Span (ft.-in.) ctr to ctr of supports										
			4-0	4-6	5-0	5-6	6-0	6-6	7-0	7-6	8-0	8-6	9-0
1	A22	3'-9"	81 / 107	64 / 75	52 / 55	43 / 41	36 / 32	31 / 25	26 / 20	23 / 16	20 / 13	18 / 11	16 / 9
	A20	4'-8"	100 / 137	79 / 96	64 / 70	53 / 53	45 / 41	38 / 32	33 / 26	29 / 21	25 / 17	22 / 14	20 / 12
	A19	5'-6"	119 / 167	94 / 117	76 / 85	63 / 64	53 / 49	45 / 39	39 / 31	34 / 25	30 / 21	26 / 17	24 / 15
	A18	6'-2"	138 / 195	109 / 137	88 / 100	73 / 75	61 / 58	52 / 45	45 / 36	39 / 30	34 / 24	30 / 20	27 / 17
2	A22	4'-7"	87 / 276	69 / 194	56 / 141	46 / 106	39 / 82	33 / 64	28 / 52	25 / 42	22 / 35	19 / 29	17 / 24
	A20	5'-9"	106 / 344	84 / 242	68 / 176	56 / 132	47 / 102	40 / 80	35 / 64	30 / 52	27 / 43	24 / 36	21 / 30
	A19	6'-10"	124 / 411	98 / 289	80 / 210	66 / 158	55 / 122	47 / 96	41 / 77	36 / 62	31 / 51	28 / 43	25 / 36
3	A18	7'-4"	140 / 473	111 / 332	90 / 242	75 / 182	63 / 140	53 / 110	46 / 88	40 / 72	35 / 59	31 / 49	28 / 41
	A22	4'-7"	108 / 216	85 / 152	69 / 111	57 / 83	48 / 64	41 / 50	35 / 40	31 / 33	27 / 27	24 / 23	21 / 19
	A20	5'-9"	132 / 270	105 / 189	85 / 138	70 / 104	59 / 80	50 / 63	44 / 50	38 / 41	33 / 34	30 / 28	26 / 24
	A19	6'-10"	155 / 322	122 / 226	99 / 165	82 / 124	69 / 95	59 / 75	51 / 60	44 / 49	39 / 40	35 / 34	31 / 28
	A18	7'-4"	175 / 370	138 / 260	112 / 190	93 / 142	78 / 110	67 / 86	58 / 69	50 / 56	44 / 46	39 / 39	35 / 32

Notes: 1. Minimum exterior bearing length required is 1.50 inches. Minimum interior bearing length required is 3.00 inches. If these minimum lengths are not provided, web crippling must be checked.